

Wheel Features

Tread Material:	PU	Core Material:	High Strength PP
Bearing:	Single Ball Bearing	Tread Hardness:	95A±3
Temperature:	-20°C~50°C	Running Speed:	4km/h

Note: Use beyond temperature range or beyond the recommended speed may shorten product life or even damage the product.



- ✔ Precision ball bearing, flexible rotation
- ✔ Injection polyurethane, glue-free self lock structure oil resistance, wear resistance
- ✔ Environmental protection, quiet, effectively protect the floor
- ✔ With plastic covers, thread-proof design

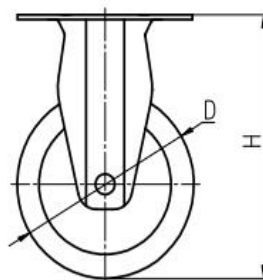
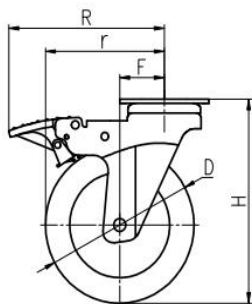


Rolling resistance	■ ■ ■ ■ □	Very good
Wear resistance	■ ■ ■ ■ ■	Excellent
Operating noise	■ ■ ■ ■ □	Very good
Floor surface preservation	■ ■ ■ ■ □	Very good

Bracket Features

- ✔ ON/OFF pedals, stable braking effect, easy to operate
- ✔ Bracket made of pressed steel plate, firm and strong
- ✔ Powder spray treatment, superior anti-rust and anti-corrosion performance, salt spray test over 72 hours

Parameter (mm)	Capacity	Wheel Dia.	Wheel Width	Total Height	Offset	Swivel Radius	Swivel Radius
3"	80 kg	75	25	105	36	73.5	102
4"	90 kg	100	25	138	34	84	102



Mounting Drawing

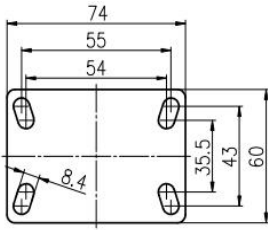


Plate Swivel/Brake

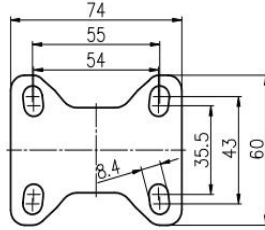
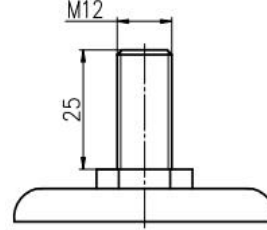
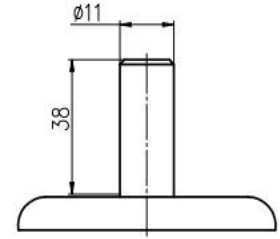




Plate Fixed



Threaded Stem



Stem of Swivel

Product ID							
Wheel Size	Plate swivel	Plate fixed	Plate swivel brake	Threaded stem	Threaded stem brake	Stem Swivel	Stem Brake
3"	20C19-1621	20C21-1621	20C20-1621	20C28-1621	20C29-1621	20C42-1621	20C43-1621
4"	20C25-1622	20C27-1622	20C26-1622	20C32-1622	20C33-1622	20C44-1622	20C45-1622

Product Details

Double steel bowl design is flexible in rotation, Stable structure.



Silver powder surface treatment is beautiful, environmental protection and good corrosion resistance performance.



ON/OFF brake is easy to operate, effortless and can be operated by fingers.



Arc wheel shape is easy moving, effortless. concave-convex plastic cover, beautiful and anti-winding

