

Wheel Features

Tread Material:	Nylon	Core Material:	Cast Iron
Bearing:	Tapered Bearing	Tread Hardness:	75D±3
Temperature:	-30°C~90°C	Running Speed:	4km/h

Note: Use beyond temperature range or beyond the recommended speed may shorten product life or even damage the product.



- ✔ Precision conical bearing, high load bearing, flexible rotation
- ✔ Casting nylon material, high load capacity, low starting force
- ✔ No deformation, anti-aging, durable to humid environment
- ✔ Painted, anti-rust and anti-corrosion
- ⚠ Hard wheel material, it may damage epoxy flooring
- ⚠ Wheel running may cause some noise

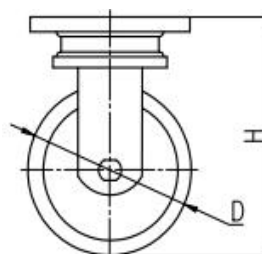
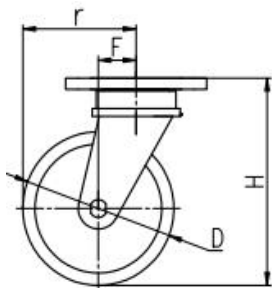


Rolling resistance	■ ■ ■ ■ □	Very good
Wear resistance	■ ■ ■ ■ ■	Excellent
Operating noise	■ ■ □ □ □	Acceptable
Floor surface preservation	■ ■ □ □ □	Acceptable

Bracket Features

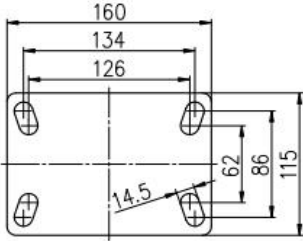
- ✔ Easy to operate, convenient to release the brake
- ✔ Plane bearing, high load capacity, impact resistance and flexible steering
- ✔ Radial conical bearing, high load capacity and impact resistance
- ✔ Single-piece forged base, fully welded, impact resistance and high load capacity
- ✔ Thickened top plate, resistant to compress. Thickened bracket wings, improved load performance.
- ✔ Powder spray treatment, superior anti-rust and anti-corrosion performance, salt spray test over 72 hours

Parameter (mm)							
Wheel Size	Capacity	Wheel Dia.	Wheel Width	Total Height	Offset	Swivel Radius	Swivel Radius
6"	1500 kg	150	64	205	60	135	270
8"	1800 kg	200	64	255	60	160	270
10"	2500 kg	250	80	310	75	200	298
12"	3000 kg	300	80	360	75	225	

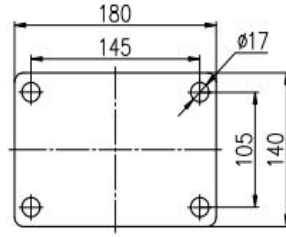


[English]

Mounting Drawing



6"-8"Plate Swivel/Brake/Fixed



10"-12"Plate Swivel/Brake/Fixed

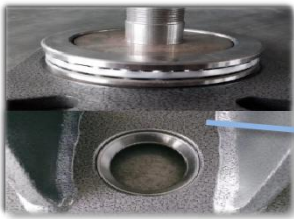
Product ID	Product Images			
Wheel Size	Plate swivel	Plate fixed	Plate swivel brake	Plate swivel brake
4"	40A01-1164	40A02-1164	40A13-1164	40A27-1164
5"	40A03-1165	40A04-1165	40A14-1165	40A28-1165
6"	40A05-1166	40A06-1166	40A15-1166	40A29-1166
8"	40A19-1167	40A20-1167	40A21-1167	/

Product Details

The plate and the base are integrally forged and formed.



The swivel structure is assembly by plain bearing and tapered bearing, with high loading capacity and impact resistance, and flexible.



The brake pedal is convenient to operate and the brake tension can be adjusted.



Double tapered bearing with high load capacity.



[English]

